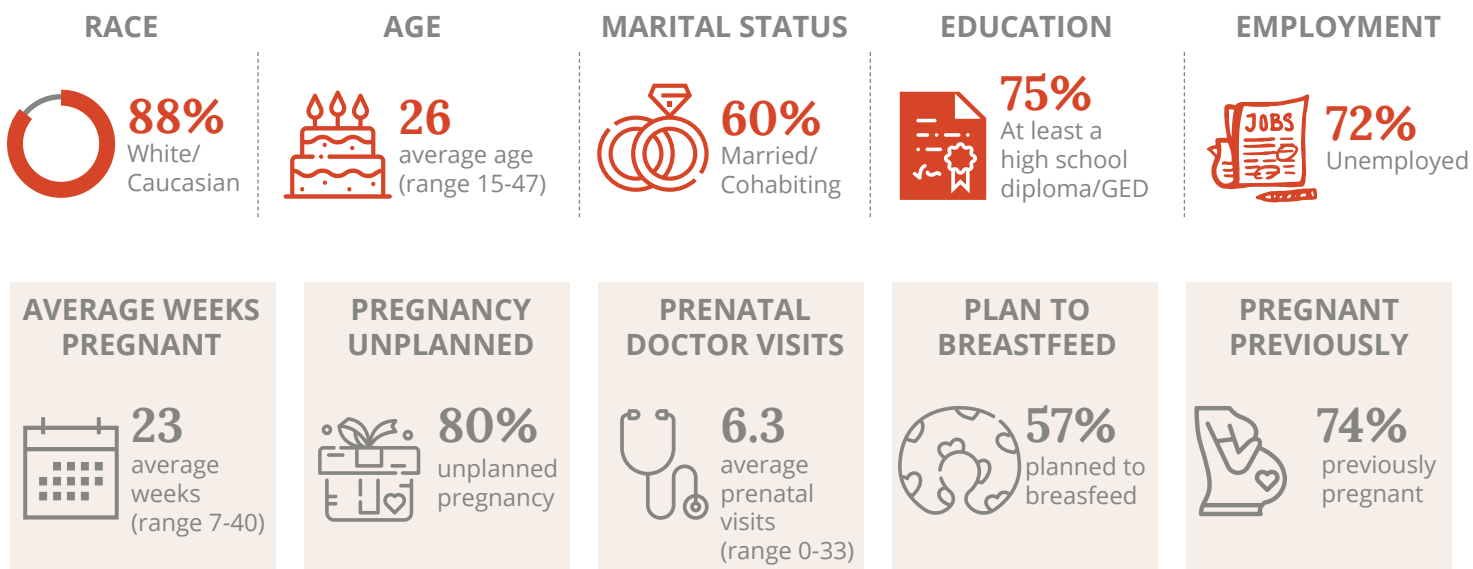


# Who is Served by the KY-Moms MATR Program? A Snapshot of Pregnant Clients at Baseline

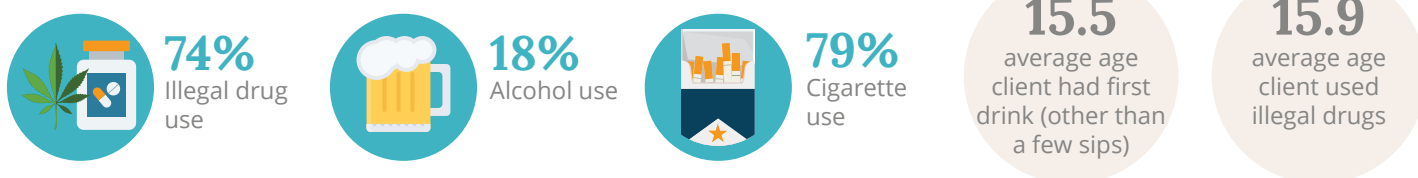
The KY-Moms MATR case management program is part of the Governor's Office of Early Childhood's Kentucky Invests in Developing Success NOW (KIDS NOW) and is administered by the Division of Behavioral Health in the Department for Behavioral Health, Developmental and Intellectual Disabilities; KY-Moms MATR (502) 564-4456/ (800) 374-9146

This fact sheet summarizes characteristics reported by 177 pregnant women in the KY-Moms MATR program who completed an baseline assessment between June 2016 and December 2017.



## Risk Factors at Baseline

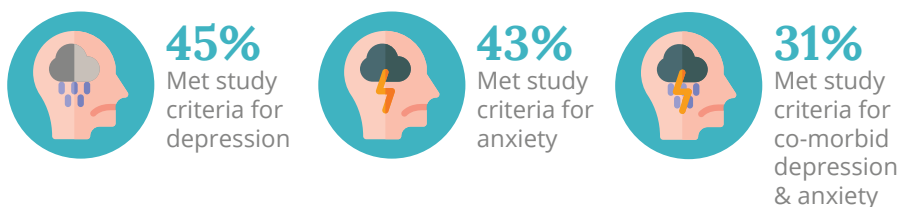
### SUBSTANCE USE 6 MONTHS BEFORE PREGNANCY



### ADVERSE CHILDHOOD EXPERIENCES (ACE)



### MENTAL HEALTH 6 MONTHS BEFORE PREGNANCY



### INTIMATE PARTNER VIOLENCE 6 MONTHS BEFORE PREGNANCY

